

## VERTICAL HI-RISE FAN COIL UNITS TYPE S CONCEALED SLAVE MODEL SERIES: 39VH

### MODELS:

- 39VHZ Chilled Water.
- 39VHZW Chilled and Hot Water.
- 39VHZE Chilled Water and Electric Heat.

### COIL OPTIONS:

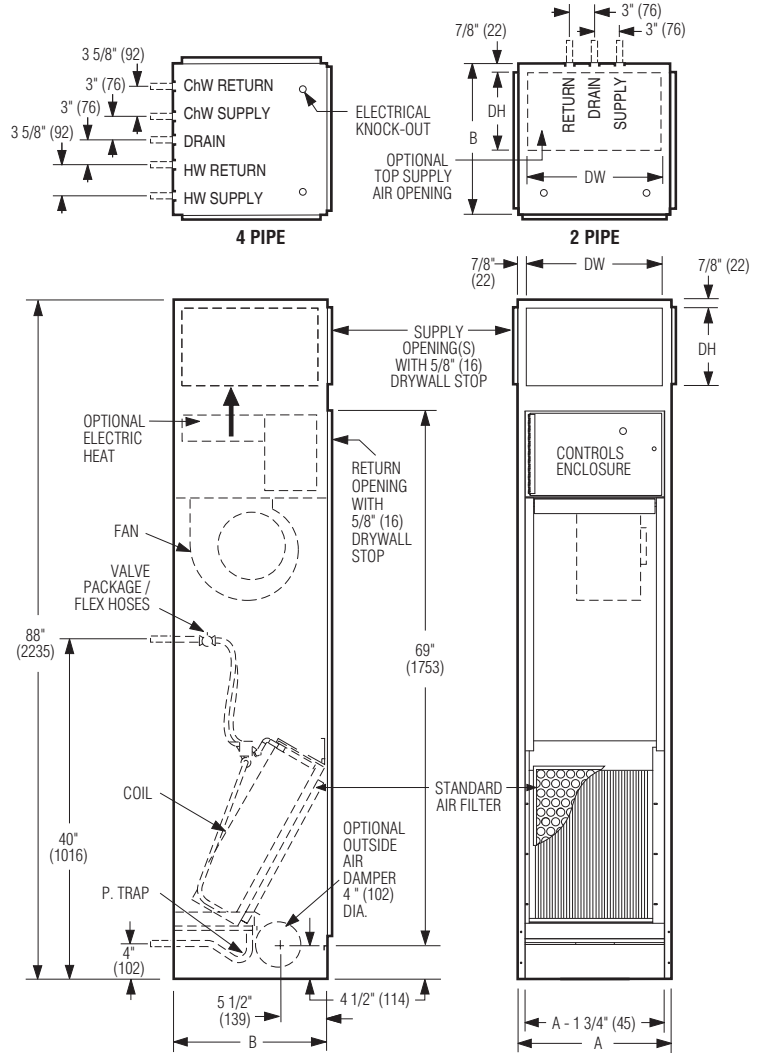
- 2 Pipe System:**
- 3 Row coil.
  - 4 Row coil.
- 4 Pipe System:**
- 4 Row - 3 CW, 1 HW coil.
  - 5 Row - 3 CW, 2 HW coil.
  - 5 Row - 4 CW, 1 HW coil.

### STANDARD FEATURES INCLUDE:

- 20 ga. (1.0) galvanized steel casing.
- Three speed (tap) PSC motor with thermal overload protection.
- 1/2" (13) x 2 lb/cu.ft. density water repellent insulation.
- 1" (25) throwaway filter.
- Galvanized steel insulated drain pan.
- Factory installed P-Trap.
- Supply grille(s).
- Front return panel (see separate submittal) with powder coat finish.
- Factory installed piping package(s).

### OPTIONS:

- Ultra-high efficiency Epic ECM motor.
- Ultra-high efficiency 3-Speed ECM.
- Electric Heat.
- 18 ga. (1.3) galvanized steel casing.
- Stainless steel drain pan.
- Outside air damper.
- Steri-liner insulation.
- Fiber-free insulation.
- 1" (25) MERV 8 filter.
- Top supply outlet.
- Special features: \_\_\_\_\_



### Dimensional Data.

Unit Size		Footprint A x B	Supply Grille Nominal DW x DH	Standard Filter Size
PSC Motor	ECM Motor			
3, 5, 6	6	18 x 18 (457 x 457)	16 x 10 (406 x 254)	13 1/8 x 16 3/4 (333 x 425)
8, 10	10	20 x 20 (508 x 508)	18 x 10 (457 x 254)	15 1/2 x 24 (394 x 610)
12, 15	15	24 x 24 (610 x 610)	22 x 10 (559 x 254)	18 1/2 x 29 (470 x 737)
19, 21	19	30 x 24 (762 x 610)	28 x 10 (711 x 254)	24 1/2 x 29 (622 x 737)



### NOTES:

1. Wiring from electrical entry knock-out to controls enclosure is furnished and field installed by others.
2. Risers available from 3/4" (19) to 3" (76) dia. with either 1/2" (13) or 3/4" (19) thick insulation.
3. Max. riser length is 120" (3048), 100" (2540) min.
4. Back riser connection location shown. See separate submittal for available riser and discharge grille unit configurations.
5. All piping and insulation between slave unit and risers is furnished and field installed by others.
6. All coil and drain connections are retracted internally for shipping.
7. Coil connections are 5/8" (16) O.D. sweat. Drain P-Trap is designed to accept 7/8" (22) O.D. copper tube.
8. Slave unit riser connections are built "mirror image" to master unit.
9. Slave units are furnished with factory installed shut-off valves and field connection tubes, unless master unit risers are shipped loose. See drawing no. 39VH/L-2 for shipped loose riser details.

### SCHEDULE TYPE:

### PROJECT:

### ENGINEER:

### CONTRACTOR:

Dimensions are in inches (mm).

DATE	B SERIES	SUPERSEDES	DRAWING NO.
11 - 15 - 11	39	1 - 11 - 11	39VH-5