

## VERTICAL HI-RISE FAN COIL UNITS TYPE E (EXPOSED) MODEL SERIES: 39VH

### MODELS:

- 39VHZ Chilled Water.
- 39VHZW Chilled and Hot Water.
- 39VHZE Chilled Water and Electric Heat.

### COIL OPTIONS:

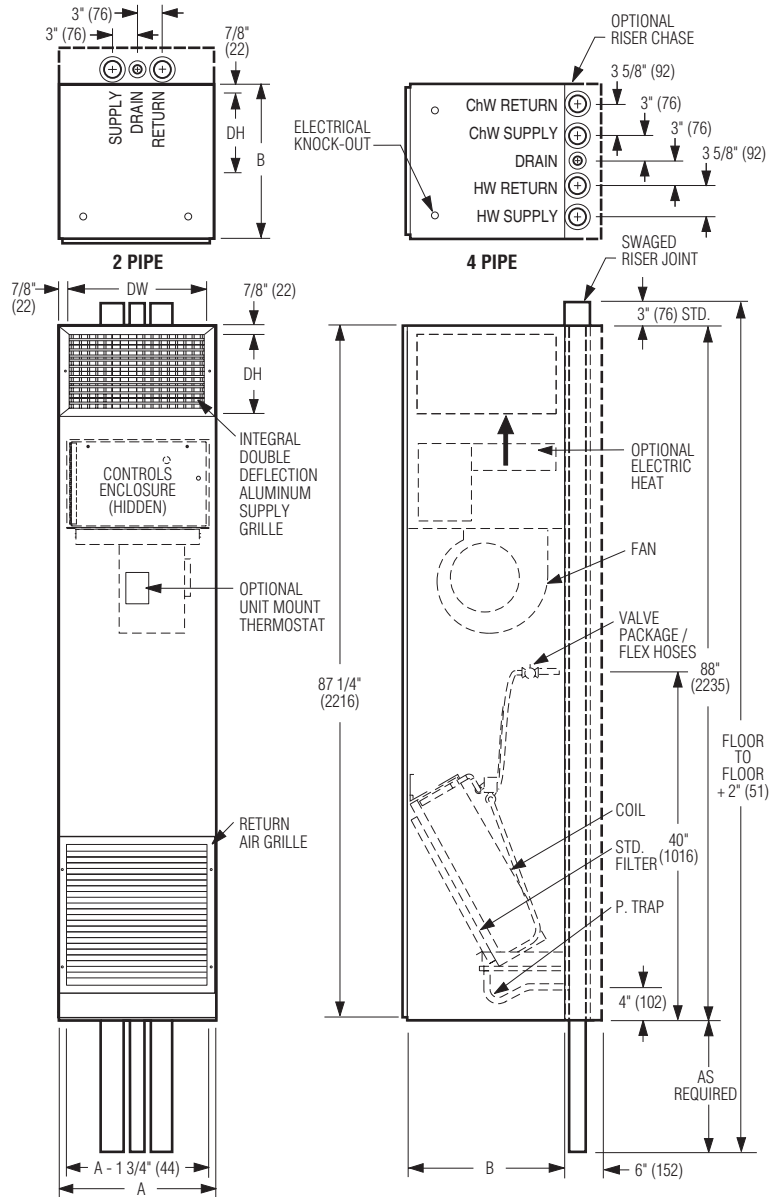
- 2 Pipe System:**      **4 Pipe System:**
- 3 Row coil.             4 Row - 3 CW, 1 HW coil.
  - 4 Row coil.             5 Row - 3 CW, 2 HW coil.
  - 5 Row - 4 CW, 1 HW coil.

### STANDARD FEATURES INCLUDE:

- 18 ga. (1.3) galvanized steel casing.
- Three speed (tap) PSC motor with thermal overload protection.
- 1/2" (13) x 2 lb/cu.ft. density water repellent insulation.
- 1" (25) throwaway filter.
- Galvanized steel insulated drain pan.
- Factory installed P-Trap.
- Full length integral supply grille/return air front panel (Removable for access).
- Standard cabinet and front panel finish is AW
- Factory installed piping package(s).

### OPTIONS:

- Ultra-high efficiency Epic ECM motor.
- Ultra-high efficiency 3-Speed ECM.
- Riser Chase.
- Electric Heat.
- Stainless steel drain pan.
- Steri-liner insulation.
- Fiber-free insulation.
- 1" (25) MERV 8 filter.
- Special features: \_\_\_\_\_.



### Dimensional Data.

Unit Size		Footprint A x B	Supply Grille Nominal DW x DH	Standard Filter Size
PSC Motor	ECM Motor			
3, 5, 6	6	18 x 18 (457 x 457)	16 x 10 (406 x 254)	13 1/8 x 16 3/4 (333 x 425)
8, 10	10	20 x 20 (508 x 508)	18 x 10 (457 x 254)	15 1/2 x 24 (394 x 610)
12, 15	15	24 x 24 (610 x 610)	22 x 10 (559 x 254)	18 1/2 x 29 (470 x 737)
19, 21	19	30 x 24 (762 x 610)	28 x 10 (711 x 254)	24 1/2 x 29 (622 x 737)

### NOTES:

1. Wiring from electrical entry knock-out to controls enclosure is furnished and field installed by others.
2. Risers available from 3/4" (19) to 3" (76) dia. with either 1/2" (13) or 3/4" (19) thick insulation.
3. Max. riser length is 120" (3048), 100" (2540) min.
4. Back riser location shown. See separate submittal for available riser and discharge grille unit configurations.
5. Units available with back riser only.
6. Factory mounted risers shown. See drawing 39VH/L-2 for shipped loose riser details.



### SCHEDULE TYPE:

### PROJECT:

### ENGINEER:

### CONTRACTOR:

Dimensions are in inches (mm).

DATE	B SERIES	SUPERSEDES	DRAWING NO.
11 - 15 - 11	39	8 - 20 - 08	39VH-2