

## LOW PROFILE VERTICAL HI-RISE FAN COIL UNITS (SHORT CABINET)

### TYPE A/B PAIRED (CONCEALED) PIGGYBACK ASSEMBLY

#### MODEL SERIES: 39L

#### MODELS:

- 39LZ** Chilled Water.
- 39LZW** Chilled and Hot Water.
- 39LZE** Chilled Water and Electric Heat.

#### 2 Pipe System:

- 3 Row coil.
- 4 Row coil.

#### 4 Pipe System:

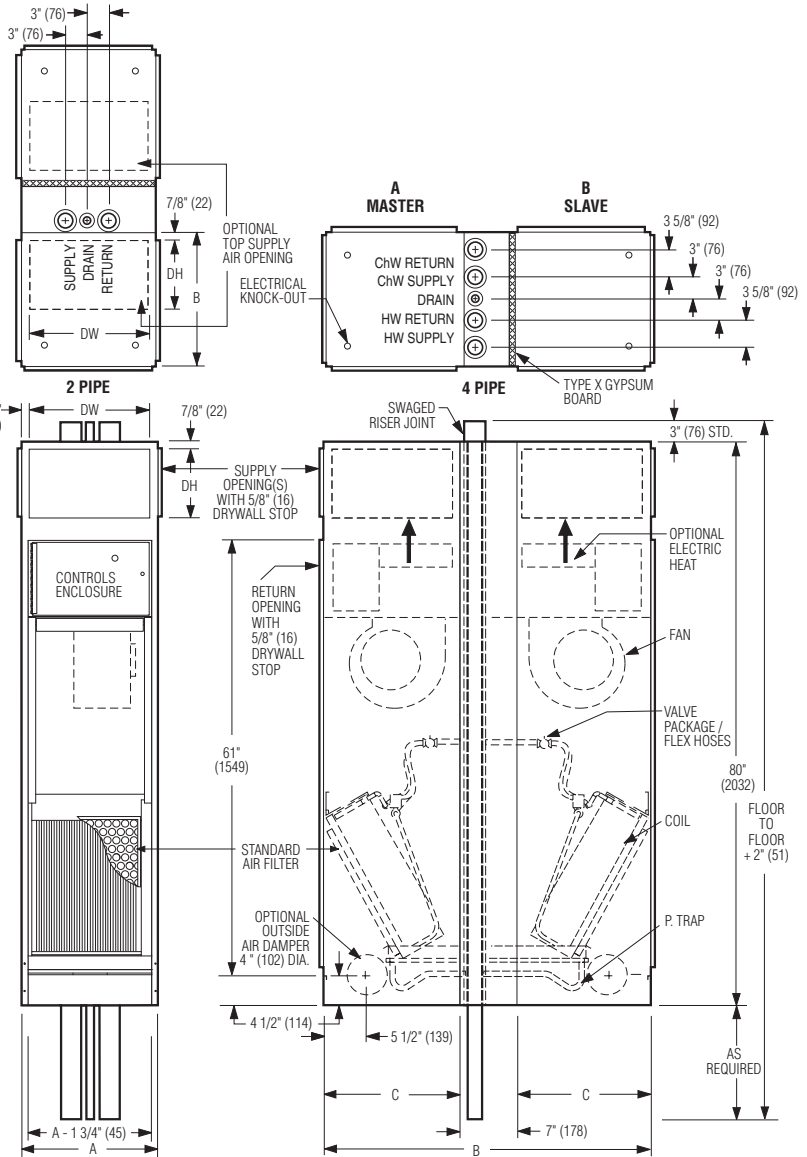
- 4 Row - 3 CW, 1 HW coil.
- 5 Row - 3 CW, 2 HW coil.
- 5 Row - 4 CW, 1 HW coil.

#### STANDARD FEATURES INCLUDE:

- 20 ga. (1.0) galvanized steel casing.
- Three speed (tap) PSC motor with thermal overload protection.
- 1/2" (13) x 2 lb/cu.ft. density water repellent insulation.
- 1" (25) throwaway filter.
- Galvanized steel insulated drain pan.
- Factory installed P-Trap.
- Supply grille(s).
- Front return panel (see separate submittal) with powder coat finish.
- Factory installed piping package(s).

#### OPTIONS:

- Ultra-high efficiency Epic ECM motor.
- Ultra-high efficiency 3-Speed ECM.
- 1 Hour Fire Rated Unit (UL Standard 1479). ETL Listed: File# 3188823SAT-005. Adds second layer of Type X gypsum board on master unit and fire blocking at pipe penetrations.
- Electric Heat.
- Stainless steel drain pan.
- Outside air damper.
- Steri-liner insulation.
- Fiber-free insulation.
- 1" (25) MERV 8 filter.
- Top supply outlet.
- Special features: \_\_\_\_\_



#### Dimensional Data.

Unit Size		Footprint A x B	C	Supply Grille Nominal DW x DH	Standard Filter Size
PSC Motor	ECM Motor				
3, 5, 6	6	18 x 43 (457 x 1092)	18 (451)	16 x 10 (406 x 254)	13 1/8 x 16 3/4 (333 x 425)
8, 10	10	20 x 47 (508 x 1194)	20 (508)	18 x 10 (457 x 254)	15 1/2 x 24 (394 x 610)
12, 15	15	24 x 55 (610 x 1397)	55 (610)	22 x 10 (559 x 254)	18 1/2 x 29 (470 x 737)
19, 21	19	30 x 55 (762 x 1397)	55 (610)	28 x 10 (711 x 254)	24 1/2 x 29 (622 x 737)

#### NOTES:

1. Wiring from electrical entry knock-out to controls enclosure is furnished and field installed by others.
2. Risers available from 3/4" (19) to 3" (76) dia. with either 1/2" (13) or 3/4" (19) thick insulation.
3. Max. riser length is 112" (2845), 92" (2337) min.
4. Back riser location on Type A unit shown. See separate submittal for available riser and discharge grille unit configurations.
5. Non-fire rated unit shown with single layer Type X gypsum board at back of slave unit.



#### SCHEDULE TYPE:

#### PROJECT:

#### ENGINEER:

#### CONTRACTOR:

Dimensions are in inches (mm).

DATE	B SERIES	SUPERSEDES	DRAWING NO.
11- 15 - 11	39	5 - 25 - 10	39L-3A